



Waterproofing Paste & Waterproofing Kit

01/01/24

Kelmore's Waterproofing Paste is a ready to use, rapid drying, liquid membrane designed to protect moisture sensitive wall and floor backgrounds in wet areas prior to tiling. Used in conjunction with Kelmore's reinforcing tape and preformed corners, this highly polymer modified paste, once dry creates an extremely flexible waterproof layer, protecting backgrounds from potential water damage. Only requiring a single coat application, this self-priming, quick drying product enables tiles to be fixed after only 3 hours.



Waterproofing Paste & Waterproofing Kit

Pack Size (Waterproofing Paste)	2.5kg
Waterproofing Kit contents	Waterproofing Paste 2.5kg Reinforcing Tape 10m Internal Corners x 2 A pair of disposable gloves
Colour	Light Grey
Application Temperature (air and background)	≥ 5°C
Application Thickness	Approximately 1mm
Tile after (@20°C)	3 hours
Consumption per mm thickness	0.38kg/m ²
Coverage per pack size	2.5kg = 6.5m ²

Areas of Use

Walls	Floors	Interior	Domestic	Commercial	Showers	Wet Rooms
-------	--------	----------	----------	------------	---------	-----------

Suitable Wall Backgrounds

Cement:Sand Render	Plaster (Finish Coat)	Plasterboard	Tile Backer Boards
--------------------	-----------------------	--------------	--------------------

Suitable Floor Backgrounds

Cement:Sand Screed (inc. Heated)	Concrete	Calcium Sulphate/ Anhydrite Screed (inc. Heated)	Existing Ceramic, Porcelain, and Natural Stone Tiles	Plywood Overlay (Class 3)	Tile Backer Boards
----------------------------------	----------	--	--	---------------------------	--------------------



BACKGROUND AND SURFACE PREPARATION

Backgrounds must be sufficiently dry and strong enough to carry the total weight being applied. Ensure any falls in the substrate have been constructed to the required gradients and all drainage is able to efficiently cope with the expected rate of water flow. All surfaces must be clean, sound, flat and free from contaminants that could inhibit adhesion, such as dust, dirt, oil, grease, laitance, and curing agents. Timber bases must be adequately ventilated and able to carry the additional static and dynamic load without deflection.

Backgrounds deemed to be *very porous* should be primed with one coat of PrimeMore Universal diluted 1:3 with water. The primer must be allowed to dry before applying Waterproofing Paste. ** Any porous background, if preferred and without detriment, can also be primed prior to applying Waterproofing Paste.*

Guidance notes on suitable wall backgrounds

CEMENT:SAND RENDER: Must be true and firmly bonded to the background. It should be prevented from rapid drying before being allowed to air dry in good conditions for a minimum of 2 weeks.

PLASTER: Tiles should be fixed only to a finish coat of plaster. Ensure it is dry, sound, free from any loose or weak material and well adhered. If a backing coat as well as a finish coat has been applied, this must be allowed to dry for a minimum of 4 weeks. Plaster that has been overly trowelled should always be brushed down with a stiff brush. Maximum permitted weight when tiling on plaster coated with Waterproofing Paste is 20kg/m².

PLASTERBOARD: Plasterboard fixed to timber studwork must be of sufficient thickness, securely fixed and rigid. Where boards are directly bonded to solid walls, allow the board adhesive to fully set before tiling. Maximum permitted weight when tiling onto bare plasterboard coated with Waterproofing Paste is 32kg/m².

TILE BACKER BOARDS: Ensure the boards are installed as instructed by the manufacturer. Boards fixed to timber studwork must be of sufficient thickness, securely fixed and rigid. Where boards are directly bonded to solid walls, ensure the adhesive has fully set and that any mechanical fixings, as instructed by the manufacturer, have been used. Proprietary boards will have varying weight limits – check with the manufacturer.

Guidance notes on suitable floor backgrounds

CEMENT:SAND SCREED: Allow newly installed screeds to dry for a minimum of 3 weeks. *For preparation and drying times of proprietary cementitious screeds, follow the guidance of the manufacturer.*

HEATED CEMENT:SAND SCREED: New heated screeds must be commissioned from 3 weeks after screed installation and before work commences. The screed should be heated slowly at a maximum rate of 5°C per day until the maximum operating temperature (as recommended by the heating manufacturer) is reached. Hold this temperature for 3 days before allowing the screed to cool.

All proprietary cementitious screeds should be commissioned and prepared in accordance with the recommendations of the screed manufacturer.

Underfloor heating must be switched off at least 48 hours prior to commencing work.

CONCRETE: Allow new concrete to cure before being subjected to continuous air drying in good conditions for a minimum of 6 weeks.

CALCIUM SULPHATE/ANHYDRITE SCREED: All laitance and surface contaminants must be completely removed. The screed must be confirmed adequately dry, no greater than 75% Relative Humidity (RH).

HEATED CALCIUM SULPHATE/ANHYDRITE SCREED:

All laitance and surface contaminants must be completely removed. New heated screeds must be commissioned from 7 days after screed installation and before work commences. The screed should be heated slowly and in accordance with the recommendations of the screed manufacturer. Ensure the moisture content of the screed is no greater than 75% Relative Humidity (RH).

Underfloor heating must be switched off at least 48 hours before commencing work.

EXISTING CERAMIC, PORCELAIN, AND NATURAL STONE

TILES: Must be in good condition, free from contaminants and well bonded. Ensure the existing structure can take the additional weight of the new tiling.

PLYWOOD OVERLAY (CLASS 3): Ensure the subfloor is rigid, flat, dry and adequately ventilated. The plywood must be a minimum 15mm thick and be conditioned to the appropriate moisture content for the environment. Screw fix at a maximum 300mm centres.

TILE BACKER BOARDS: Ensure the boards are installed as instructed by the manufacturer and that they are securely fixed to rigid, suitable, prepared bases. Where the boards have been installed on solid bases using tile adhesive, ensure the adhesive has fully set before commencing work.

Application

Kelmores Waterproofing Paste is ready to use and must be used in conjunction with Kelmores's reinforcing tape and preformed corners when waterproofing backgrounds. Please follow the application instructions below:

1. Fit the preformed corners.

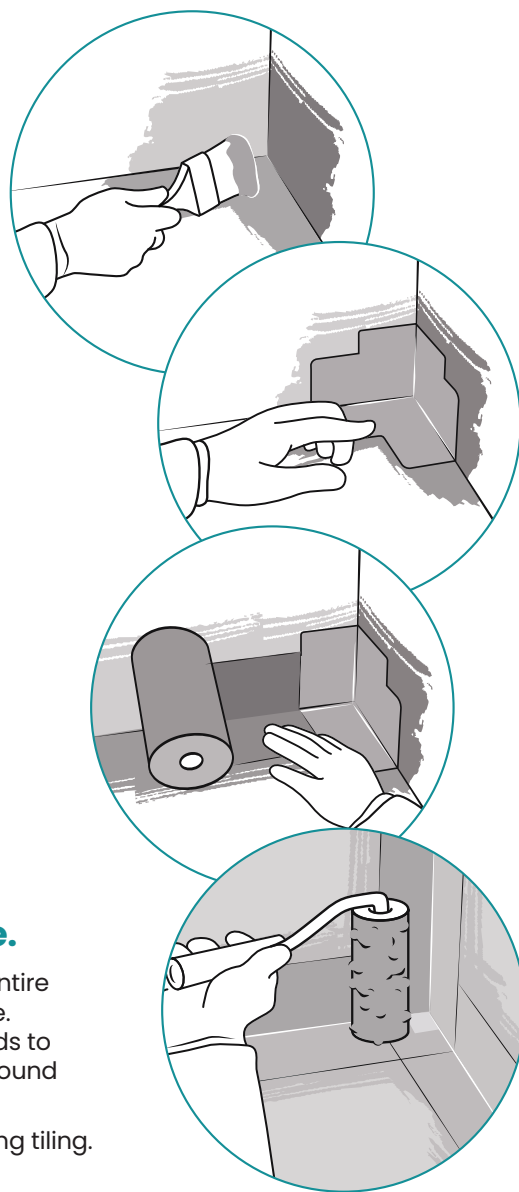
- Apply Waterproofing Paste directly to the background. The application area must be slightly wider than the surface area of the preformed corner.
- Press the preformed corner firmly in place ensuring it is fully embedded within the wet paste and is sat flat.
- Smooth to ensure good contact and remove any excess paste from the edges.
- Repeat this process until all preformed corners have been fitted.

2. Tape all junctions, board joints, pipe outlets and fixing points.

- Starting with the junctions where the walls meet the floor, measure and pre-cut lengths of the reinforcing tape (allow for the tape to overlap any preformed corners by a minimum 30mm).
- Apply Waterproofing Paste to the background of these junctions and the overlap area on the preformed corners ensuring the application area is slightly wider than the surface area of the tape.
- Press the tape firmly in place ensuring it is fully embedded within the wet paste and is sat flat.
- Smooth to ensure good contact and remove any excess paste from the edges of the tape.
- Repeat this process until all junctions, board joints, pipe outlets and fixing points have been reinforced.

3. Apply one coat of Kelmores Waterproofing Paste.

- Using a medium pile roller or brush, uniformly apply the paste to the entire area, including coating the surface of the reinforcing corners and tape. Do not over apply the product, Kelmores Waterproofing Paste only needs to be applied as a thin coat, approximately 1mm thick, where the background is not visible through it once dry.
- Allow the area to fully dry for a minimum of 3 hours before commencing tiling.



Drying

Drying times will vary dependent on the porosity of the background, ambient temperature and humidity. When tested at 20°C, and with good airflow, Waterproofing Paste is dry and ready to receive tiles after 3 hours. Please be aware that lower temperatures, high humidity and a lack of airflow will extend the drying time.

NOTE: Kelmores Waterproofing Paste must only be used on dry, internal backgrounds and is not suitable in areas subject to rising damp or negative water pressure. Do not use in areas of total water immersion such as swimming pools and storage tanks.

CLEANING: All tools should be cleaned with water after use and before the product dries.

HEALTH AND SAFETY: For detailed information, please refer to and follow the advice stated on the SDS (Safety Data Sheet) which can be accessed on our website – www.kelmores.co.uk or alternatively by contacting Kelmores Ltd.

STORAGE AND SHELF LIFE: Kelmores Waterproofing Paste/Kit must be protected from frost and stored in unopened packaging, off the ground, and in cool, dry conditions. If stored in this way, the shelf life of the Waterproofing Paste is 12 months.

BS 5385: Kelmores Waterproofing Paste/Kit should be used in conjunction with work carried out under the British Standard Code of Practice for Wall and Floor Tiling.

All the information supplied by Kelmores Ltd is offered in good faith and is derived from the company's combined knowledge, experience and testing. Without prior notice, due to on-going research and development, the information we offer can be updated at any time. Kelmores's products are developed, tested and manufactured to consistently high standards, however, we accept no liability for any loss or damage which may arise from factors outside of our control, such as site conditions and/or the execution of the work.